



**Travel Plan  
May 2018**



<b>Contents</b>	<b>2</b>
<b>Statement of Commitment</b>	<b>3</b>
<b>Introduction</b>	<b>4</b>
<b>Travel Plan Aims and Objectives</b>	<b>5</b>
<b>Current Conditions and Challenges</b>	<b>6</b>
<b>Monitoring and Review</b>	<b>8</b>
<b>Action Plan</b>	<b>9</b>
<b>Appendices</b>	<b>14</b>



## Statement of Commitment

With any school travel plan the overriding criteria has to be the safety and welfare of the children. This plan is designed to reduce the amount of cars that may be in site at the beginning and end of the school day to ensure pupil safety.

Through the framework travel plan the school confirms their commitment to undertake pupil, parent and staff travel surveys with the help of Cardiff Council. The school also commits to undertaking a site audit. Following this work a full travel plan can be written with measurable targets set out and associated timeframes. More detail can be found in the Action Plan at the end of this document.

For the plan to be successful it will require a partnership approach and active monitoring that will involve all sections of the school community and partners such as the local authority and school neighbours.

Signed: Rh. Corbis

Date: May 2018

Head teacher

Signed: [Handwritten Signature]

Date: May 2018

Chair of Governors

Ysgol Hamadryad  
Hamadryad Road  
Butetown  
Cardiff  
CF10 5UY  
**May 2018**



## Introduction

This Travel Plan has been created to support the development of the new Ysgol Hamadryad. It sets out how the school intends to reduce the impact of travel to the site by pupils, staff and visitors. The travel plan will be seen as an ongoing process, to evolve over time and requiring active monitoring and evaluation. Ysgol Hamadryad is Cardiff's first sustainable travel school and is a great opportunity to be a flagship project for other schools to follow. The travel plan will therefore have a strong emphasis on ensuring that parents, guardians and children can walk and cycle to and from the school along convenient routes. The routes must be safe, and importantly should also feel safe.

### What are the benefits of the Travel Plan?

A Travel Plan programme can help change the way we travel to work and school. This can contribute to cleaner air, a better local environment for residents, pedestrians and cyclists and potentially to decreasing traffic congestion in the area at peak times. It may also help to relieve the pressures of parking at the site and in the local area.

Walking and cycling can help improve health and fitness. Studies show that educational achievement and readiness to learn improve when students travel to school actively.



## Travel Plan Aims and Objectives

The aim of this travel plan is to encourage healthy, sustainable and active travel. The following objectives have been set:

1. Increase travel awareness of pupils, staff and parents
2. Increase the levels of walking and cycling for school travel through promotion and ensure it is maintained
3. Increase the usage of public transport by promoting the use of bus and rail for travel to and from the school
4. Promote safety on the journey to and from school
5. Contribute to improving the health of pupils by promoting more active modes of travel
6. Reduce the number of children travelling to the school by car.

These objectives provide the focus for the identification and development of measures and actions within the plan.

There is very limited safe legal parking available within a 5 to 10 minute walk of the school. For this reason the school will need to be accessed mainly by sustainable transport means. The school therefore has a target of 70% travelling to and from the school by sustainable transport means; i.e. walking, cycling or using public transport.

Following on from the completion of a travel survey targets will be set to achieve increased sustainable travel and decreased car use. These objectives will also have associated measures with a timescale for their achievement. Progress will be reviewed through annual monitoring.



## Current Conditions and Challenges

### The local area

The school is within the Butetown ward of Cardiff. The site location and surrounding area are shown on the travel map in **Appendix A**.

Ysgol Hamadryad is a Welsh-medium primary school that opened in September 2016 as a one form entry starter school and was expanded to a 2 form entry primary school from September 2017. The existing school is located on a temporary site off Sloper Road, Grangetown whilst a new building is being built for the school at Hamadryad Park, Butetown.

The new Welsh-medium primary school building can accommodate 420 statutory age pupils, with a 48 place nursery, which will open in January 2019 to meet the demands for pupil places in the Butetown and Grangetown areas of Cardiff.

The wards of Butetown and Grangetown are covered by the Cardiff City and South Neighbourhood Partnership. The areas resident population has increased by 53.7% from the 2001 Census estimate with a population density of 30.2 people per hectare, compared with a Cardiff average of 24.7 people per hectare.

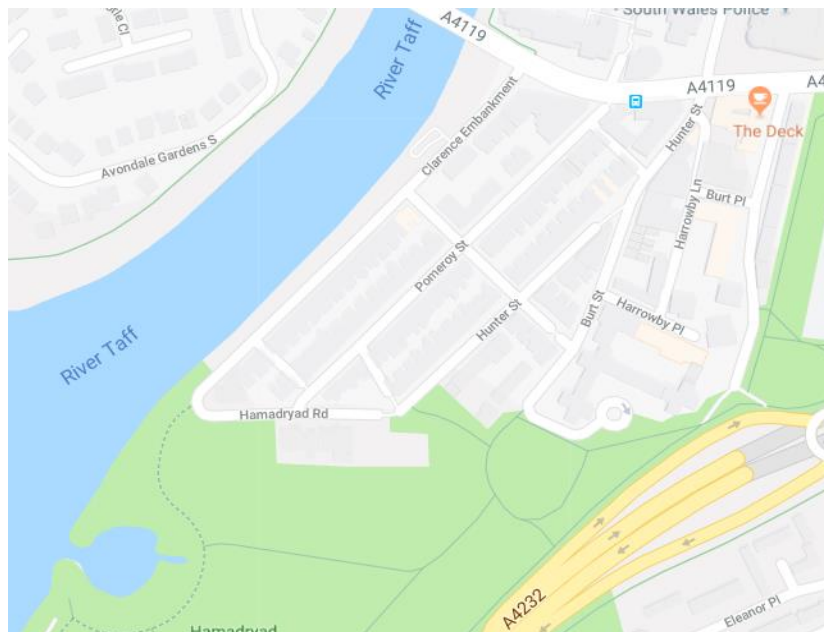
City & Cardiff South is home to Wales' oldest multi-cultural society in the Butetown ward. The ward of Butetown is home to some of the most important institutions of Wales and the Welsh language, including the Senedd, the Millennium Centre and the Urdd. The Welsh language is heard here on a daily basis, but Ysgol Gynradd Gymraeg Hamadryad will be the first Welsh-medium school to be located in the area. Grangetown is also home to a very mixed multi-cultural society.

The redevelopment of Cardiff Bay since the late 1980s has led to a much more mixed socio-economic profile of neighbourhoods, within Butetown in particular. According to the 2011 Census of population, 63.8 % of residents in the City & Cardiff South neighbourhood were of white ethnicity. This was lower than the Cardiff average of 87.4%.



### Immediate access to the school

The site is located immediately north of Hamadryad Park. The school will be accessed off Hamadryad Road from the north and from Hamadryad Park from the South, it is bordered by river to the West, and approx. 2 miles from the city centre.



Hamadryad Park was originally a piece of waste ground that comprised salt marsh and inter-tidal mud flats in Cardiff Docks known as Rat Island. Much of the area has since been raised with inert fill to create land. Ysgol Hamadryad is being built on this land and due to its southern location, the area comprises of narrow residential streets which offer a restricted location for access by vehicles. There is a residents parking scheme in operation in the surrounding streets, however the majority of parking spaces are used by daily commuters due to its location to local organisations and businesses within the Bay.

Ysgol Hamadryad does not currently have a catchment area yet it is proposed that consultation is undertaken in accordance with the Welsh Governments Admissions Code from September 2018. This will help establish the boundaries of an area to focus transport planning.

### School accessibility

The lack of available on road, un-restricted parking availability within a 5 to 10 minute walking distance of the school entrance remains to be the main issue. It is proposed that this school is established as a sustainable transport school with the following modal split:

- Walking / Cycling / Scooters – 70%
- Car / Park & Walk / Car Share - 25%
- Other – 5%

This is an ambitious target of 70% sustainable transport mainly in the form of walking; although ambitious, it is considered that this is achievable if there is strong



emphasis on this target and the sustainable transport vision as soon as the school becomes operational. Parents will need to be encouraged to agree and sign up to this vision upon joining the school. In order to ensure that sustainable transport to and from the school is as safe and as convenient as reasonably possible, the following measures are required.

Traffic proposals were put out to consultation in February 2018. The Transport Project proposals relating to the Hamadryad School have been split into three separate schemes:

- **Hamadryad School Safety Zone**
- **Clarence Road – Access Improvements**
- **Avondale Road – Access Improvements**

The three consultation reports have been drafted and are internal documents at this stage. These were sent to the Local Ward Members for their comments / approval at the end of May; as part of the Council's standard Transport Projects consultation. When these reports have been signed off / agreed by the Local Ward Members the final reports will be published on the Council's website summarizing the outcome and delivery methods.

It will be important to consider the provision of formal crossing points, the need for a school crossing patrol, parking restrictions, keep clear areas, drop off areas and how pedestrians and vehicles access the school.

Parents raise concerns

### Travel patterns

Prior to the school occupying the new building a survey will be carried out to ascertain how each pupil gets to school each day and the results will be shared with all parties. The school will endeavour to make this information easily available.

The school has been recording trips of pupils to the school using Travel Tracker online software. These are the results from 25 May 2018. The results of any other day of term can be produced upon request.

Class	Total pupils	Walk	Bike	Scooter	Park and stride	Hop off	Other	Bus	Rail	Car	Total trips
Derbyn	17	3	1	5	4	0	0	0	0	3	16
Meithrin Bore	24	4	2	6	2	0	0	0	0	8	22
Meithrin Prynawn	16	1	1	5	6	0	0	0	0	4	17
Blwyddyn 1	17	3	1	2	4	0	0	0	0	7	17

### The Staff Travel Survey

We currently have 9 members of staff. This will increase on an annual basis. One member of staff will walk, two will travel by rail, one will cycle and the other five, will either travel by car or park and stride depending on their after school commitments. Staff will make a conscious effort to change their travel plans at least once a week.





The school falls within the ward of Butetown. The 2011 Census statistics show 31% - 35% of residents have no access to a car or van in the household, compared to 29% with no access to a car or van for the whole of Cardiff. This suggests possibly a third of the populations within these areas will be using sustainable modes of transport to access the school suggesting that it may be realistic to expect an increase in sustainable travel when smart actions are followed and monitored.

## Walking and Cycling

The walking and cycling routes close to the school are shown on the travel map in **Appendix B**.

Walking and Cycling has been identified as the preferred option for the vast majority of parents as the mode of transport they will chose to the school site. The half-term activity encouraged parents to travel to the school site and plan their mode of transport. Walking, scooting, 'park and stride' and cycling were promoted and an 'exclusion zone' for cars was suggested. A large proportion will be able to travel all of the journey to school using sustainable methods, those for whom distance was an issue preferred the 'park and stride' option.

The Cardiff Cycling and Walking Map provides further information on routes in the area. This is shown in **Figure 3**.

The Cardiff Cycling and Walking Map provides further information on routes in the area and across the city. This is available by contacting [cycling@cardiff.gov.uk](mailto:cycling@cardiff.gov.uk) or through the Cardiff Council website.

A "Walking Audit" was carried out in May 2016. This contains useful information about the walking routes to the school. This will be used as a reference document to help the school carry out a pro-active role in the promotion of improvements to help pedestrians walking to and from the school

Over the Spring half-term parents/carers were asked to travel with their children to the new school site at Hamadryad Park, map their route and note down what they liked/disliked and what they would improve about the route to school.

Here is a summary of the comments from that exercise and ideas for improvements that should be put into place by the Council before the school is built to make the route safer and easier for children and their parents/carers to travel actively to school:

- Crossing assistance at the zebra crossings on Clarence Road and a lollipop person on the crossing
- Speed controls in the area, for example cars coming off the A4232 frequently fail to stop and often exceed speed limit, suggestion for 20mph.
- Upgrading the crossings on the bridge at Clarence Road for bikes.
- Improve and widen pavements along riverbanks and Clarence Rd bridge to get a double buggy along safely.
- Street lighting needs to be consistent on the main walking and cycling routes.
- Designated cycle/scooter path throughout the main routes to the school.
- A foot bridge, or a boat, across the river would cut travel time dramatically and make green travel much more accessible.



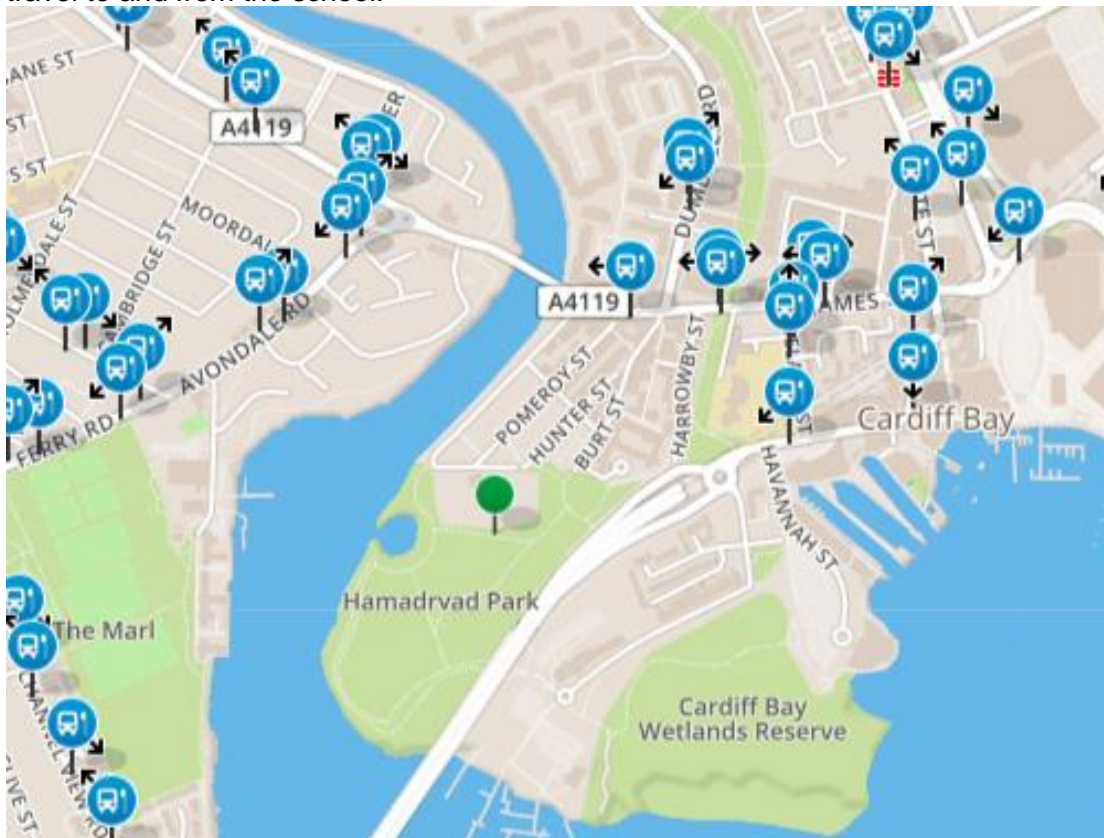
- Crossing the road near the Salvation Army roundabout/walking in front of the petrol station is dangerous. New crossing needed here.
- Re-surface the bridge pavement and segregate cars away from pedestrians and bikes on Clarence Rd bridge.

The full results of the half term activity are shown in **Appendix D**.

### Public transport

Bus numbers 8, 1, 2 (Cardiff Bus), 89A, 89B (Watts Coaches), and 304 (New Adventure) stop on James Street. Bus routes are shown in **Appendix C**. It is recognised that school catchment areas mean that walking and cycling are viable modes of transport to school but that parents/carers may want to make onward journeys as part of linked trips.

In the half-term activity some parents indicated they would use public transport to travel to and from the school.



Local Bus stops (Source: Cardiff Bus)

### Car use

There is no parking provision on the site for parents/guardians and the available parking within the surrounding area is very limited. It is therefore advised that private vehicular transport to and from the school should be avoided unless there are no other options.



It is understood that private vehicle transport has to be used on some occasions and in these cases it is recommended that you park safely and legally well away from the school gates and walk to and from the school along the safe walking routes provided.

### Summary of key issues

The main issues for the site in terms of travel that should be addressed within the Travel Plan are described below;

- **Walking:** ensuring that safe walking routes are promoted
- **Cycling:** ensuring that safe cycle routes are promoted
- **Public Transport:** promoting more public transport use
- **Staff Car Use:** promote alternatives to single occupant vehicle journeys to the school
- **Monitoring:** ensuring that regular monitoring and updating of the travel plan is undertaken.
- The 'how to get to school' section of the school website will be in place before the end of the Autumn Term 2018 in order that parents and pupils can best plan how they will travel to the new school.



## Monitoring and Review

The Travel Plan is an active process that will evolve as the school changes over time either through development, local transport changes or pupil numbers. For these reasons, the continuous monitoring and review of the content and progress of this travel plan is critical.

### How will the plan be monitored?

The initial baseline travel survey of pupils/staff was undertaken in February 2018. This initial survey/analysis was submitted to Cardiff Council, these surveys will be repeated annually at around the February half term holiday. This information will be disseminated on an annual basis and will be fed into the school's Travel Plan.

An additional survey/analysis may be undertaken during the annual review so as to address issues/initiatives arising. However, the core of the survey will remain where staff and pupils/parents/carers live and how they travel to school. This information is required to measure progress towards the mode share targets in the Action Plan, and to inform the development of initiatives to improve the travel situation.

The aspirational targets for travel to the school by pupils, staff and parents will be reviewed on an annual basis. When a target is met new ones will be set to ensure that progress continues to be made.

### Who is responsible for monitoring and review?

The Travel Plan Action Group (TAG) will be responsible for monitoring and reviewing the travel plan. It will meet regularly to discuss the progress of the travel plan. Personnel involved will include the Headteacher, Governing Body representatives, H&S Officer, Cardiff Council Transport department and SOP team.

### How will changes be reported?

The TAG will provide the school community with regular updates in the progress of the travel plan and travel issues through the school newsletter, website, emails, assemblies and parents evenings. The results of the annual monitoring will be shared with Cardiff Council's transport policy team ([travelplans@cardiff.gov.uk](mailto:travelplans@cardiff.gov.uk)).



## Action Plan

Implementation of the Travel Plan:

1. Induction meetings will enable us to share our concerns and the plan with parents;
2. Cardiff Council to devise traffic calming plan for the school site and area. Local residents to be an important part of this consultation process.
3. Parent engagement event – parents asked to plan their routes to the new school site to help identify areas to encourage walking/cycling and possible walking bus drop off/collection points
4. Walking bus to be set up from Jan 2019, as soon as possible after occupation
5. Bike shelters to be incorporated as integral design of school ready for January 2019.

Proposed Initiatives

- The possibility of a 'walking bus' - parents to be asked if they would like to be involved. **Action: carry out survey to establish numbers of interested parents or carers. Ask County Road Safety team to come to speak to those parents and carers to set up the ' walking bus'.**
- Bike shelters will be included in the design of the new school. **Action: to ensure that the architect integrates a bike shelter as part of the overall plans.**
- Council to consider options for alleviating future traffic problems. This may be a real issue when building work begins on the new school. The contractor must produce a robust traffic management plan. **Action: school to be involved in any proposed traffic management changes.**
- Parents will not be encouraged to drive onto school site and they will only be granted permission under exceptional circumstances ie child illness, disability etc. If for these reasons permission to enter site via a car is granted the parent / carer will be informed of rules when driving onto the site through a member of the Senior Management Team. **Action: 5mph signs to be erected at entrance to school. Access to the front entrance and playground to be security gated to allow access for deliveries and staff.**
- Develop interactive walking bus routes to school with signage. **Action: The school governing body will include the walking bus in meeting agendas to ensure that the walking bus opportunities are maximised.**



The Action Plan below sets out a number of suggested actions and has been tailored to meet the particular needs and circumstances of Ysgol Hamadryad.

Actions to promote all sustainable modes					
Objective	Group	Action	Target	Responsibility	Timescale
1	Communication	Conduct pupil, parents and staff travel surveys to develop a baseline, followed by annual updates	Annual surveys	School / Local Authority	Medium Term, Continuous
1	Communication	Conduct a site audit and repeat annually	Annual audits	School / Local Authority	Medium Term, Continuous
1	Facility	Select pupils to be added to the Travel Action Group (TAG) and nominate a Travel Plan Coordinator	Cross section of school community, different aged pupils, staff, and parents.	Travel Plan Coordinator	Short Term, continuous
1	Communication	School Council members of TAG to present travel plan issues to school	Annual presentation.	TAG/ School Council	Medium term
1	Promotional Event	Publicise and educate the school community about travel initiatives and progress	Additions to school newsletters, assemblies, class activities, notices, posters	TAG	Short Term, continuous
1	Communication	Make School Travel Plan available to parents, staff and pupils	Publish travel plan on the school website, hard copies available for parents and pupils at school	TAG	Short Term, continuous
1	Communication	Ensure the families of all new and potential pupils receive information on travel options	Information added on travel in school prospectuses.	TAG/School	Short Term, continuous
1	Education	Investigate opportunities for pupils to identify the consequences of travel decisions as part of the curriculum	Addition into classes e.g. through Healthy School or Eco School initiatives	School	Medium Term
1	Communication	Information to parents and pupils including the use of local maps.	Up to date information provided to all parents and pupils	TAG/Support from Local Authority	Short Term, continuous





Actions to promote all sustainable modes					
Objective	Group	Action	Target	Responsibility	Timescale
1	Communication	Conduct a pupil mode travelled to school survey and use results as baseline for creating measurable targets and other actions	Conduct first travel survey within first 6 months of adopting the travel plan	TAG/School/Local Authority	Short Term, continuous
1	Communication	Add staff and parents surveys into travel plan	Send out surveys through school email and newsletters annually	TAG/School/Local Authority	Medium Term
1	Communication	Split pupil travel to school data by age	Make a note of class when recording data annually	TAG/School	Medium Term
1	Communication	Add a 'how to get to school' section on the school website. Detailing all the sustainable travel options	Update information when new cycle/walking routes becomes available or if a new bus service or stop is implemented	TAG/School	Short Term, continuous
Actions to promote walking and cycling					
Objective	Group	Action	Target	Responsibility	Timescale
1	Promotional Events	Get involved in national awareness events.	Participate in one walk to school event and cycle to school event a year	TAG/Local Authority	Short Term, continuous
2, 4, 5	Promotional Events	Promote safe walking and cycling routes to the school	Maps provided through newsletters to parents and staff	TAG/ Support from Local Authority	Short Term, continuous
2, 4	Facilities	Invite adult support for walk to school, Park and Stride and cycle to school initiatives.	Recruit volunteers to enable walk to school, Park and Stride and cycle to school initiatives to be implemented.	TAG	Short Term, continuous
2, 4, 5	Training	Provide pupils with road safety and cycle training.	Appropriate training available once a year	TAG / School Road Safety trainers	Medium Term
1, 5	Facilities	Promote use of the cycle facilities to pupils through assemblies/newsletters/website	Mention during assemblies/within newsletters	TAG/School	Short Term, continuous
2, 4, 5	Facilities	Consider walking buses from areas where there are concentrations of pupils.	Increased walking levels along routes with	TAG	Short Term, continuous



Actions to promote walking and cycling					
Objective	Group	Action	Target	Responsibility	Timescale
4, 5	Facilities	Identify/Create safe routes for cycling. Work with the Road Safety Officer to develop safe cycling routes and cycle ways, traffic calming and off-road routes.	Liaison with Sustrans officer	School/TAG	Short Term, continuous
4	Promotional Event	Have a 'safety first' cycle helmet/Hi-Visibility campaign	Awareness session at the start of each term	School	Short Term, continuous
1, 5	Promotional Event	Instigate 'cycle to school' days and a Biker's Breakfast or similar incentive	At least one day per term	TAG/School	Short Term, continuous
Actions to promote public transport					
Objective	Group	Action	Target	Responsibility	Timescale
3	Communication	Promote local bus stops and frequency	Add route information to newsletters and on website	TAG/School	Short Term, continuous
Actions to promote car sharing / reduce car usage					
Objective	Group	Action	Target	Responsibility	Timescale
1, 6	Communication	Identify car users and provide with tailored travel information.	Decrease in travel to site by car	TAG	Short Term, continuous
1, 6	Facilities	Produce map showing where parents and visitors to the school should and should not park.	Map available for parents, inputted with newsletters at start of each full term (and in school prospectuses)	TAG	Short Term, continuous
6	Promotional Event	Promote parking away from the school and walk children from there	Increase 'Park Safe Walk Safe' to the school	TAG/Road Safety	Short Term, continuous

Actions to promote car sharing / reduce car usage					
Objective	Group	Action	Target	Responsibility	Timescale
1, 6	Facilities	Encourage car sharing between staff to ensure that parking at the school is not over-subscribed	Provide a car share database at the school	TAG	Short Term, continuous
6	Facilities	Encourage drop-off points away from the school gate.	Information in newsletters	School	Short Term, continuous
1, 6	Facilities	Liaise with Road Safety Team and or School's Traffic Management Safety Group.	Monthly updates on safety issues	Mark Foweraker	Short Term, continuous

*Short Term – Within 6 months and then every additional 6 months*

*Medium Term – Within 12 months*





## Appendices

List of appendices:

- Appendix A – School Location Plan
- Appendix B – Walking and Cycling Routes
- Appendix C – Bus Routes

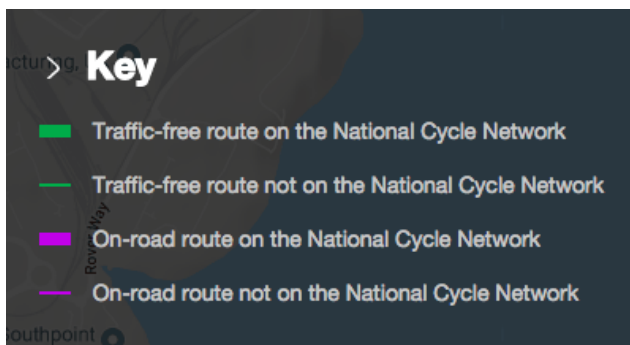
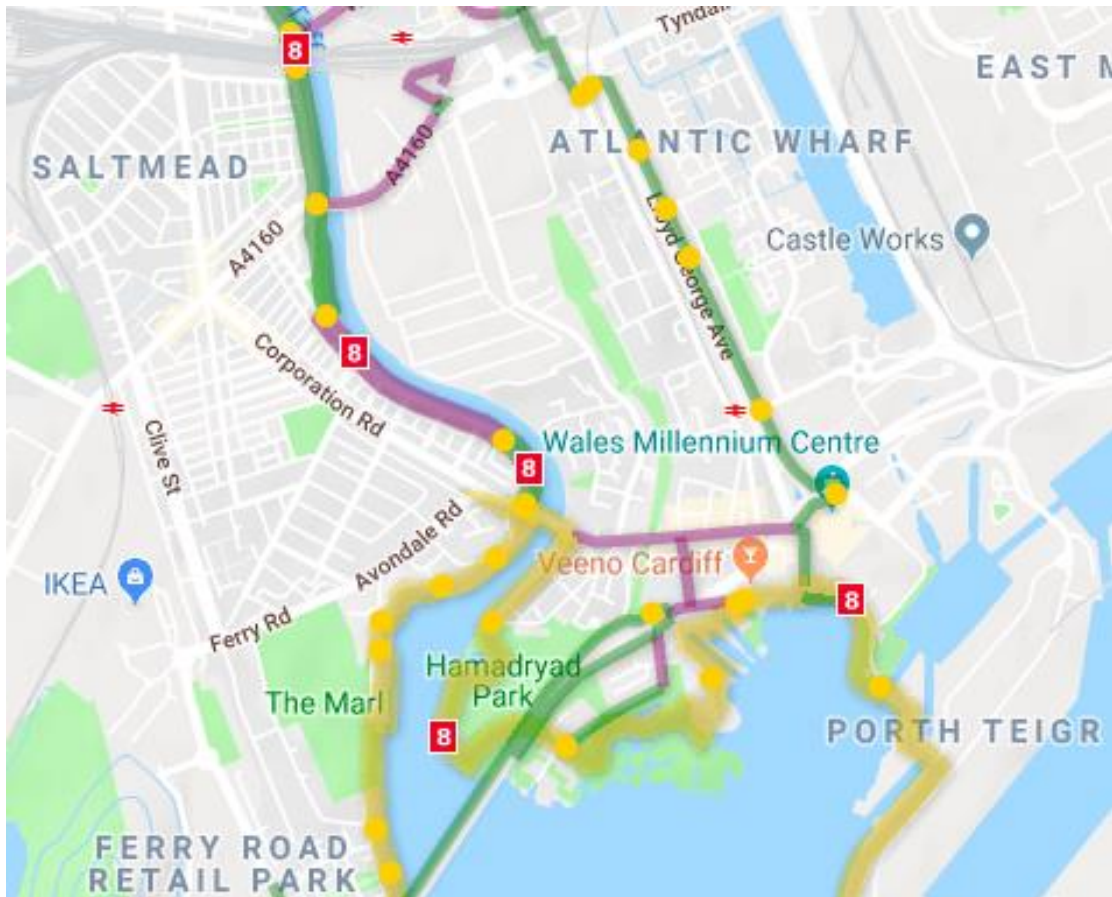


## Appendix A School Location Plan





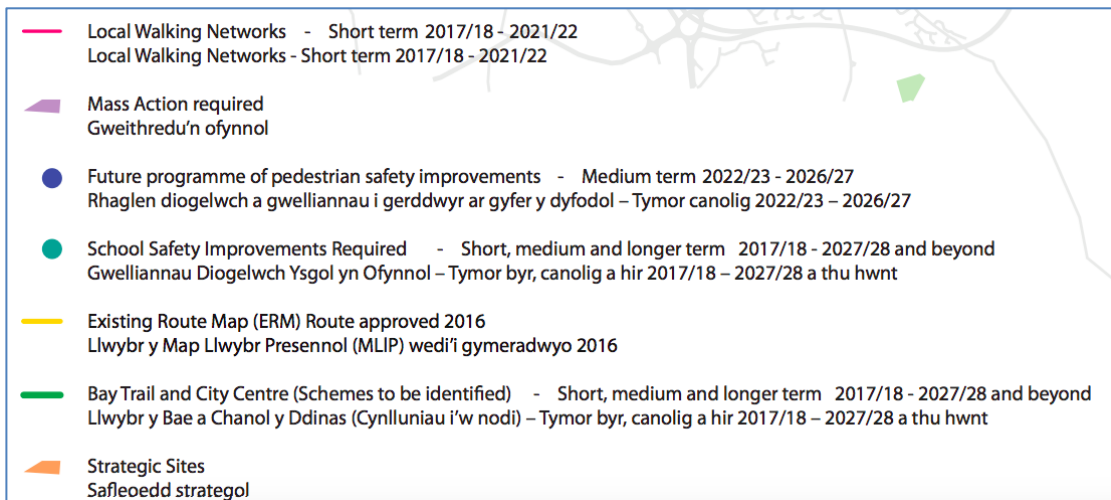
## Appendix B Walking and Cycling Routes



Source: Sustrans National Cycle Network Interactive Map

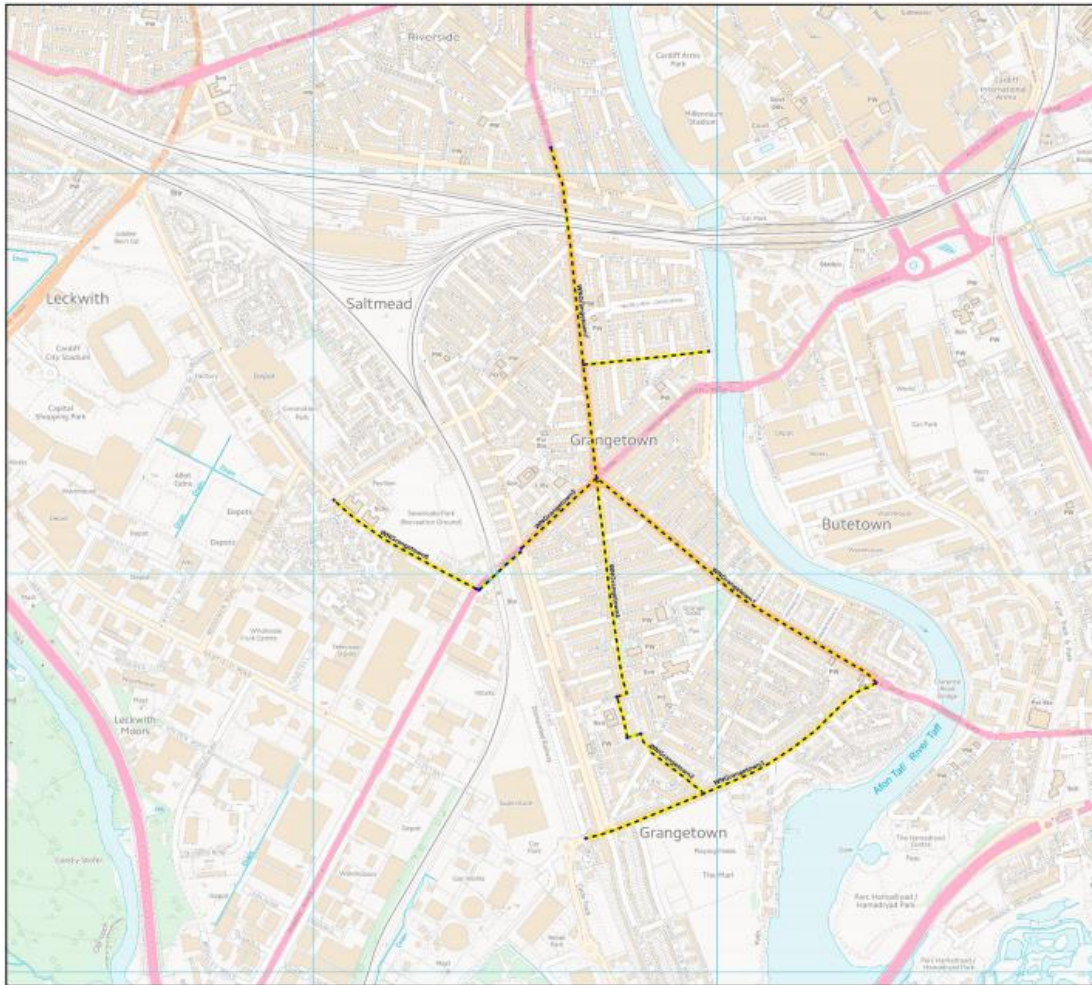


### Key



Source: Cardiff Council Integrated Network Map





**Legend / Eglurhad**

Active Travel Routes / Lwybrau Teithio Liesol

- Undefined path design / Dyluniad llwybr heb ei ddiffinio
- Footpath (away from road) / Llwybr troed (i ffordd o'r ffordd)
- Footway (alongside road) / Troedffordd (ochr yn ochr â ffordd)
- Cycle track (away from road) / Trac beicio (i ffordd o'r ffordd)
- Cycle track (alongside road) / Trac beicio (ochr yn ochr â ffordd)
- Shared use foot/cycle path (away from road) / Llwybr cerdded/beicio a rennir (i ffordd o'r ffordd)
- Shared use foot/cycle path (alongside road) / Llwybr cerdded/beicio a rennir (ochr yn ochr â ffordd)
- Segregated foot/cycle path (away from road) / Llwybr cerdded/beicio wedi'i wahanu (i ffordd o'r ffordd)
- Segregated foot/cycle path (alongside road) / Llwybr cerdded/beicio wedi'i wahanu (ochr yn ochr â ffordd)
- Cycle route (on road, not segregated) / Lôn feicio (ar y ffordd, heb ei gwahanu)
- Cycle lane (on road, segregated) / Lôn feicio (ar y ffordd, wedi'i gwahanu)
- Pedestrian zone / Ardal cerdded
- Pedestrian and cycle zone / Ardal cerdded a beicio
- Road without footway / Ffordd heb droedffordd
- Statement / Datganiad
- Line end points / Pwyntiau diwedd llinell

Source: Cardiff Council Existing Network Map of Grange Town Walking Routes



**Legend / Eglurhad**

Active Travel Routes / Llwybrau Teithio Llesol

- Undefined path design / Dyluniad llwybr heb ei ddiffinio
- Footpath (away from road) / Llwybr troed (i ffwrdd o'r ffordd)
- Footway (alongside road) / Troedffordd (ochr yn ochr â ffordd)
- Cycle track (away from road) / Trac beicio (i ffwrdd o'r ffordd)
- Cycle track (alongside road) / Trac beicio (ochr yn ochr â ffordd)
- Shared use foot/cycle path (away from road) / Llwybr cerdded/beicio a rennir (i ffwrdd o'r ffordd)
- Shared use foot/cycle path (alongside road) / Llwybr cerdded/beicio a rennir (ochr yn ochr â ffordd)
- Segregated foot/cycle path (away from road) / Llwybr cerdded/beicio wedi'i wahanu (i ffwrdd o'r ffordd)
- Segregated foot/cycle path (alongside road) / Llwybr cerdded/beicio wedi'i wahanu (ochr yn ochr â ffordd)
- Cycle route (on road, not segregated) / Lôn feicio (ar y ffordd, heb ei gwahanu)
- Cycle lane (on road, segregated) / Lôn feicio (ar y ffordd, wedi'i gwahanu)
- Pedestrian zone / Ardal cerdded
- Pedestrian and cycle zone / Ardal cerdded a beicio
- Road without footway / Ffordd heb droedffordd
- Statement / Datganiad
- Line end points / Pwyntiau ddiwedd llinell

Source: Cardiff Council Existing Network Map of Grangetown Cycling Routes





## Appendix C Bus Routes

Bus Network serving Cardiff Bay area





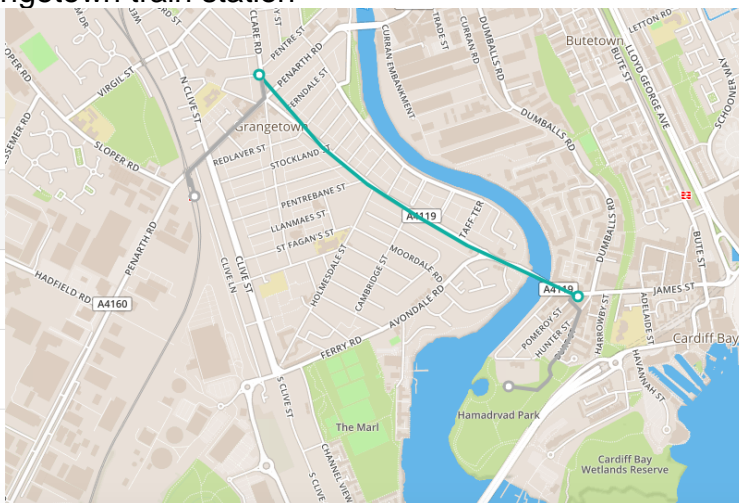
### Bus Route options to Cardiff Bay train station

<b>Hamadryad Road</b> to <b>Heol Hemingway</b>	
Depart now	
<b>11:16 → 11:30</b> Direct	<b>14 mins</b> 14 mins
<b>11:16 → 11:30</b> Direct	<b>14 mins</b> 10 mins
<b>11:08 → 11:23</b> Walking Route	<b>14 mins</b> 15 mins



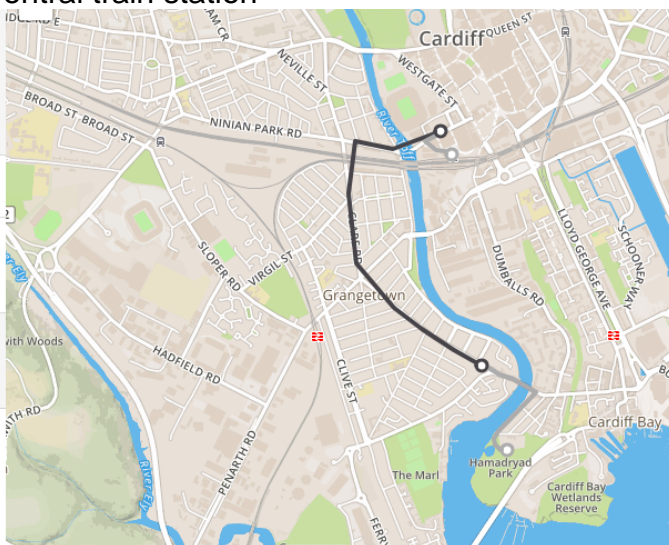
### Bus Route options to Grangetown train station

<b>Hamadryad Road</b> to <b>Penarth Road</b>	
Depart now	
<b>11:17 → 11:36</b> Direct	<b>19 mins</b> 15 mins
<b>11:14 → 11:37</b> Direct	<b>23 mins</b> 19 mins
<b>11:20 → 11:39</b> Direct	<b>19 mins</b> 15 mins
<b>11:11 → 11:37</b> Walking Route	<b>26 mins</b> 27 mins



### Bus Route options to Cardiff Central train station

<b>Hamadryad Road</b> to <b>Saunders Road</b>	
Depart now	
<b>11:19 → 11:36</b> Direct	<b>17 mins</b> 12 mins
<b>11:14 → 11:38</b> Direct	<b>24 mins</b> 15 mins
<b>11:17 → 11:39</b> Direct	<b>22 mins</b> 12 mins



Source: Cardiff Bus





## Appendix D Parents and Pupils Planning Routes to School

Class	How will you usually travel to school?	Change plans if weather is bad?	What do you like about your route to school?	What do you dislike about your route to school?	Improvements to your route to school	Events to improve walking	Use park and stride
1	Drive and Park and Stride	N	Close to a park for the summer and close to work	Hoping it won't be too busy to park and walk the last bit as I start work early		Y	Y
1	Drive and Park and Stride	N	Get to talk about the day ahead	Sometimes we are rushing	Traffic	N	Y
1	Drive as I need to go to work after drop off	N	The route to school using the path along the A4232 is nice however it is a little too long. My other concern if we were to bike and then he went onto after school club the bike is unlikely to be picked up with him	There is very little room to park even outside the marked zones	Easier access to site via car - if possible or a bus - this would reduce traffic going down the 'red zone' A bridge across the river would cut travel time dramatically and make green travel much more accessible	Y, however again I'm not sure how easy a drop off would be as there is no parking anywhere close to school	
1	Drive then walk/Park and Stride	N	On the 'fast road' and get to see the boats in the bay	Can be awful for traffic on A4232, hard to park and cross from St	Somewhere to park near St Davids Hotel to walk the rest of the	Y	Y - option ma



				Davids	way		
1	Park and Stride	Yes - try to park closer	We did this without the pull as he was away with grandparents. Minimal traffic routes	Parking here not always possible have to walk under road and through park majority of route not lit	Street lighting	N	Y
1	Park and Stride	No - we live too far away to have another option	Nice views of the water and park	Busy bridge next to a main road, didn't feel it was protected e.g. guard rail	Rail along the bridge, designated cycle/scooter path	Y	No wouldn't use it. Walkway walk him into school
1	Walk 2 days and drop off point for childminder as she has other children to take to other schools	Consider a drop off point during wet weather	In the warmer weather/lighter days it a good walk along the river	no issues		Y	Y n St Dav /Te ique
1	Walk cycle	Drive if it's raining or cold	It's a lovely refreshing walk and scenery on a sunny day. Also it's a bit of exercise for everyone	It can be difficult with parents with babies (main road and weather)	Definitely the walking bus, Somewhere closer off the main road to park	Y	Y
1	Walk, scoot, cycle	Park and Stride		Pot hole and uneven slabs, not to great for scooter wheels		Y	Y



1	In the car (park and jump) scootering / walk	We would park and jump in bad weather	walk / scooter in the open air and get to know the area	A bit busy at times	More crossings – cycle/scooter lane	yes please	Defely
1	Scooter	Walk with a broolly	Birds, trees and not too many roads to cross	Dog mess, rubbish	more bins, colourful signs, a boat or bridge	yes	yes
1	park and jump / scooter	No	Walking along the river	Mari is unhappy walking along busy roads e.g. Corporation Road and over Clarence bridge		yes	yes
1	Scooter and walk sometimes	we would go in the car	go on the scooter, listen to the sounds	Being late, rain and traffic	a lollypop person	Yes	defely
1 and Derbyn	Scooter or cycle	No - walk if it's snowy or icy	Being outside, fresh air, meeting friends on the way	Waiting to cross the road and traffic	Cycle lanes, zebra crossings	Y	?
1 and Nursery	Walk/Scoot/Buggy	No just put on coats, we may catch abus if very bad	Well if they improve the pavements all Taff embankment that will be a really nice walk along the river. But otherwise we will go down Corporation road, which is a bit grim	Corporation road is very busy and a bit grim	Improve pavements along river, I cannot get a double buggy down there due to tree roots	Y	Ma the wal g b



Derbyn	Walk	Sometimes, bus	Likes walking over the river	Car pollution really affects his chest along our whole route		Y	Y - the Gra... own... side... the... new... sch...
Derbyn	All of the above, dependent on mum and dad's work pattern	Yes – more likely to “park and jump	Fresh air, keep fit, view of river, chance to ride bike, chance to chat	The stony and narrow pavement on Clarence bridge	a wider pavement and more even on the bridge. A boat from Channel View would be fantastic!	Yes I would	In f... of... Cha... V... Cer...
Derbyn	On a bike	No	Views eg river Taff	Too many cars and pollution	less cars and pollution	No	Per... s
Derbyn	Walk	No	Everything – living on the street opposite Hamdryad Park	Nothing	No	Yes	No
Derbyn	Walk	No	No journey to talk about				if it... help... yes
Derbyn	Bike or scootering	Yes – if raining we would “Park and jump	Spend time together in the open air	Traffic – specifically on the A4119 bridge. It's narrow here and when busy it's not a pleasurable experience being on a bike	A wider cycle lane on the A4119 bridge	Yes	Yes... driv...



Meithrin	Drive then walk/Park and Stride	N	On the 'fast road' and get to see the boats in the bay	Can be awful for traffic on A4232, hard to park and cross from St Davids	Somewhere to park near St Davids Hotel to walk the rest of the way	Y	Y - opt on ma
Meithrin	Mix of cycle (using back seat) Park and Stride, Scoot, Cycle	Yes, cycling can be dangerous	Walk through the park (off road travel safer (Taff Trail)	Dangerous cycle routes, cars, not safe to allow child to cycle safely, clarence road bridge very narrow	Proper cycle routes - proper park and stride spaces	Y	Y - ma
Meithrin	Walk or scoot	N	We enjoy walking near/alongside the river spotting birds and boats	Cyclists go fast on the paths across the bridge (James st bridge)	That cyclists use the cycle lanes	Y	N
Meithrin	Walk/Scoot	N	Quick and easy				
Meithrin	Walk, Perhaps scooter/bike sometimes	Unlikely	Fresh air, not too far, see the river	Traffic, walking near Salvation Army roundabout – not an easy place to cross	Crossing the road near the Salvation Army roundabout/walking in front of the petrol station is dangerous. Crossing needed?	Ok	Per s. Dep ds what time etc
Meithrin	Walk, scooter, bike	No	Walk by the river, physical exercise, chat, go through Grange Gardens park	The bridge over the river is very busy and the pavement too stony for the scooter and the pram. Melangel failed to ride her scooter here as the	Re-surface the bridge pavement so that it's less stony. Raise a wall/fence to keep the cars away from pedestrians and bikers on the bridge.	Yes	Gen ally



				surface made her fall off			
Meithrin	Walk, scooter or bike	Perhaps park and jump if the weather is bad	We'll look forward to walking by the river	at present, crossing busy roads, especially North Clive St as some cars drive to quickly	Vehicles not to drive too quickly and not to park near dropped curbs	Yes	No, we close h
Meithrin	Walk/scooter	A public service bus goes down Corporation Road and drops off near the Police Station	able to walk and have some daily exercise	Nothing	No		
Meithrin	Drive and then park and jump	No		Traffic jams	Safe 'cycle route' for children		I would like to see The Essential Guide to the park near Davis H
Meithrin	Scooter and walk sometimes	Yes, we'd go in the car and park and walk	Music and singing, playing games like 'What am I', go on the scooter	be late, the rain, busy traffic	Lollypop people and safe route	Yes, and mum and dad and Mabli as well	Definitely! great idea
Meithrin and Dosbarth 1	Walk	N	That we can walk without having to cross a road	Nothing	N	Y	N
Nursery	Cycle but sometime	N - still cycle	Being outside and	The route is by traffic on	The crossing on the bridge	Y	?



	s walk and scoot		going along the river	the bridge and Clarence Embankment and the road works mean we have to go on the road - it's better on a cycle path	isn't for bikes, a bike crossing and cycle path here is importance for safety		
Nursery	Drive	N					
Nursery	Drive then walk/Park and Stride or bus, or cycle if nice weather	N	There are 2 parks on route	Weather when it is bad if we walk/cycle	No if there is a walkingbus service that would be great	Y	Y
Nursery	Park and Stride	N			N	N	We won't use
Nursery	Scoot and Walk	Likely	Much safer to walk to the new school and quicker to get to			Y	?
Nursery	Walk	Possibly	It's a pleasant walk by the river	Nothing really	Not that I can think of	N	Y - more info please
Nursery	Walk	We'll wear hoods or take an umbrella	We can go to the park on the way and play on the swings	Flytipping	Monitoring and prosecution of flytippers on the alley to Hunter	N	N



		a			Street		
Nursery	Walk or scoot	N	Zebra crossing for the only roads or then along the park path	The zebra crossing paint is worn off or poorly visible	A lolipop person on the crossing as cars coming off the A4232 frequently fail to stop and often exceed speed limit	Y	No, live very close
Nursery	Walk, scoot and cycle	N	Safe and easy to scoot/walk/cycle	Sometimes busy with people and if cars aren't considerate	N	N	N
Nursery	Walk, scoot and cycle	Drop off in car or get wet!	Fresh air and time to chat	Bit busy on the road across the bridge (as in narrower pavement)	Not sure	?	Yes, walking but could be good. Outside the street at the end of Moorale Road, Avondale Road, as the less cars safe drop off point
Reception	Scoot, cycle	Sometimes, bus	Crossing the river, Walking alongside the river, not crossing	The junction of Coprtporation Road and Avondale Road	Crossing assistance at this junction	Y	Y





			Penarth Road				
Reception	Scoot, cycle	Park and Stride	Like the hill because her scooter went fast	Scared in case scooter fell in the river - otherwise all is good	No, th journey is good	Y	Yes wh we r is bac in a rus for wor (Mo We
Reception	Walk	N	It is very close, we don't need to cross any roads so feels very safe	Nothing, we are lucky to be very close to the park	No	N	N
Reception	Walk, scoot, cycle	N	It's safe and easy to walk	Sometimes busy and if the cars aren't considerate	No	N	N
	Bus then walk	N	Nothing	No			?
	Walk, scoot	Someti mes, bus	Crossing the bridge	Distance	Weather - if its nice weather always is good	Y	Y
	Walk, scoot, cycle	N	Close to home	At the moment you are to few	When your in your new building		
	Walk, scoot, cycle, drive	Maybe	Riverbank	Crossing main roads	School bus service	N	Y